

Early Intervention Family Worker Newsletter

06th -10th June 2022



I am currently having some technical issues with my phone connectivity please try and contact me via email or the alternative number at the bottom of this newsletter if possible or let your school know if you have been trying to reach me.

Natalie

Open- Ended Play

What is open-ended play and how do you do it?

Open-ended play has no set rules or expectations. There is no right or wrong way to engage in open-ended play. It's more about children using materials that are available to be creative, experiment, and invent. When children choose the materials or themes, themselves, often they will be more invested in playing

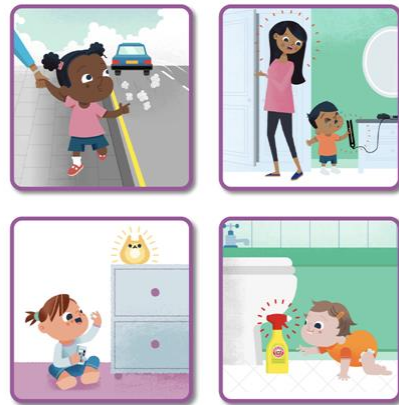
Why is open-ended play important?

The benefits of open-ended play are enormous. It challenges children to use their imagination, to investigate and problem solve. It encourages independent play and develops confidence, patience and resilience. The play can last for extended periods of time and often stretches over several days

Child Safety Week 6th - 12th June

Child Accident Prevention Trust

Safety in mind



Child Safety Week

www.capt.org.uk/child-safety-week



Safety advice and resources

Bite-sized facts and safety tips on the main accident risks to children

www.capt.org.uk

Another Resource

Cycling Safely on the Road with Children

<https://www.cyclinguk.org/article/cycling-guide/cycling-road-children>

Does your child have, or potentially have, an additional need or disability? Pinpoint (www.pinpoint-cambs.org.uk) have lots of information, advice and tips. For Cambridgeshire's Local Offer go to www.cambridgeshire.gov.uk/residents/children-and-families/local-offer



Cambridgeshire
County Council

Contact me directly on 📞 Mobile: 07824551901
Office: 01354 750419 or
natalie.ulugun@cambridgeshire.gov.uk